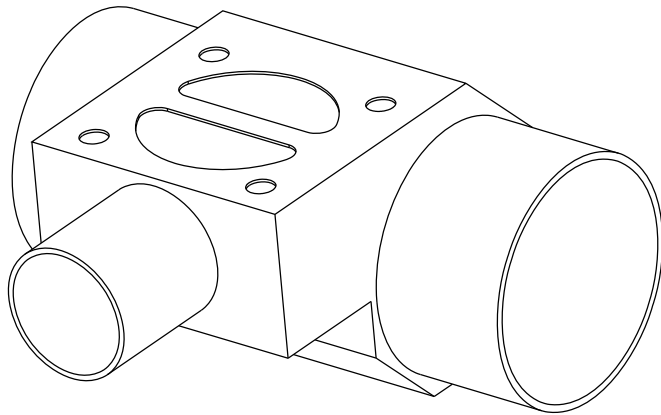
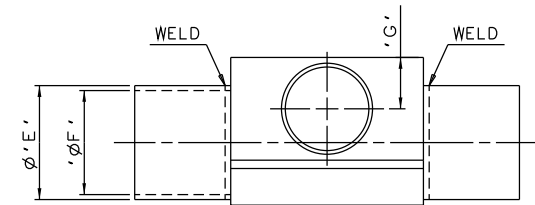
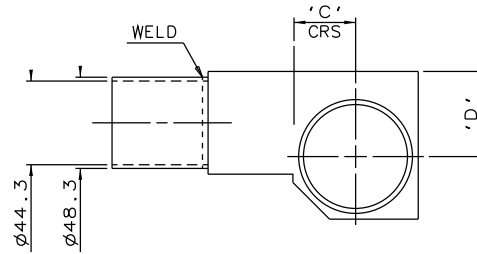
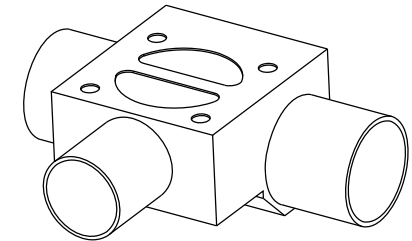
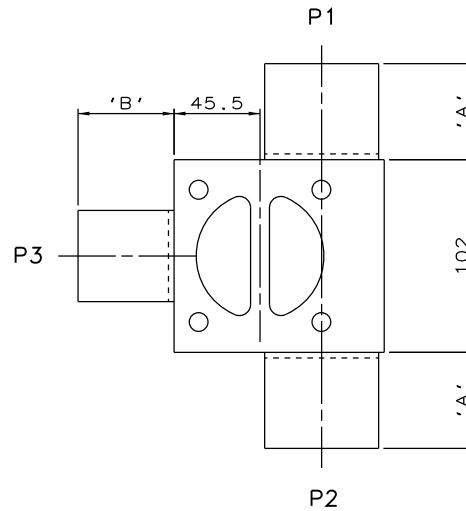


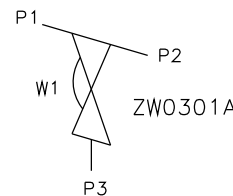
DN40 MAINLINE ONLY



DN65 TO DN100
MAINLINE ONLY



DN50 MAINLINE ONLY



ORIENTATION AS PER
P&ID DIAGRAM FOR
OPTIMUM DRAINABILITY.

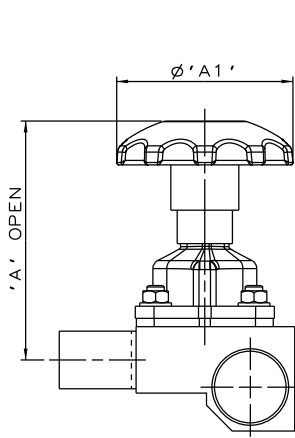
MAINLINE SIZE	A	B	C	D	ØE	ØF	G	BODY WEIGHT
mm	mm	mm	mm	mm	mm	mm	mm	Kgs
DN40	50.8	50.8	27.2	38.5	48.3	44.3	26.2	3.6
DN50	50.8	50.8	32.6	45.0	60.3	55.1	27.2	3.9
DN65	50.8	50.8	40.5	52.0	76.1	70.9	27.2	3.6
DN80	50.8	50.8	46.9	56.0	88.9	83.7	27.2	4.0
DN100	101.6	50.8	59.6	65.0	114.3	109.1	27.2	5.4

The information on this sheet is Private and Confidential and is the property of Crane Process Flow Technologies Limited and must not be published directly or indirectly in any manner whatsoever without the written permission of the Company and must not be used in any way detrimental to their interests.
© Crane Process Flow Technologies

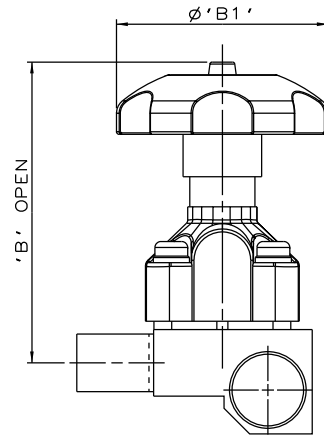
CRANE Process Flow Technologies
A Crane Co. Company

Saunders
The Science Inside

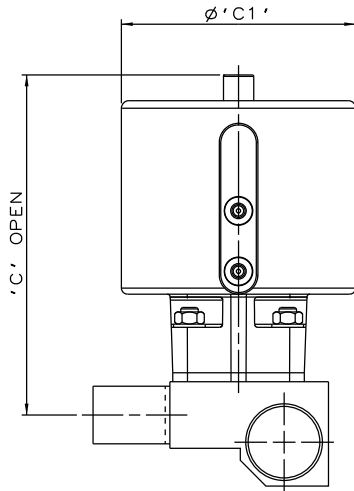
Title			
SCHEDULE OF LEADING DIMENSIONS FOR DN40 WEIR 'T' BODY WITH ISO 1127 S1 BUTT WELD ENDS			
Drawn JRD	Date 14.10.11	UNCONTROLLED IN HARD COPY FORMAT	
Checked RND	Date 23.03.12		
First Angle Projection Method E	DO NOT SCALE	Drawing No. WEB-077	Issue. 2



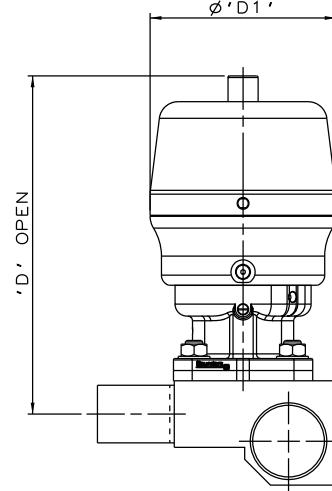
SS NON SEALED
BONNET ASSEMBLY



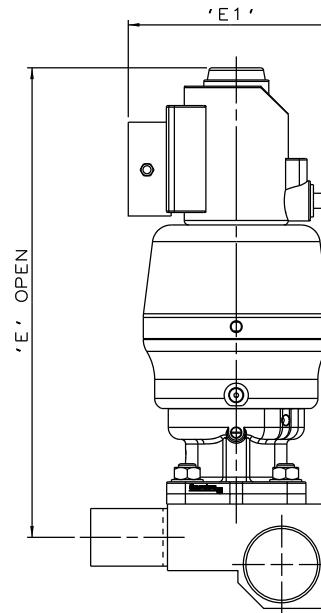
PES BONNET
ASSEMBLY



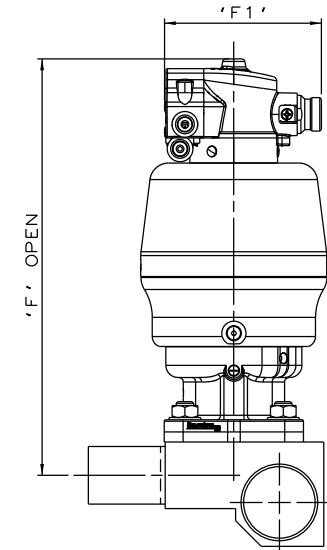
EC ACTUATOR
(ALL MODES)



*S360 ACTUATOR



*S360 ACTUATOR
WITH I-VUE SENSOR



*S360 ACTUATOR
WITH M-VUE SENSOR

*DIMENSIONS SHOW MAXIMUM ENVELOPE FOR ALL MODES

BRANCH SIZE		A		A1		B		B1		C		C1		D		D1		E		E1		F		F1	
mm	inch	mm	inch	mm	inch	mm	inch	mm	inch	mm	inch	mm	inch	mm	inch	mm	inch	mm	inch	mm	inch	mm	inch	mm	inch
DN40	1.50	163.2	6.43	120.0	4.72	204.2	8.04	140.0	5.51	230.2	9.06	155.0	6.10	229.2	9.02	123.0	4.84	316.2	12.45	136.0	5.35	280.2	11.03	103.8	4.09

The information on this sheet is Private and Confidential and is the property of Crane Process Flow Technologies Limited and must not be published directly or indirectly in any manner whatsoever without the written permission of the Company and must not be used in any way detrimental to their interests.
© Crane Process Flow Technologies

CRANE Process Flow Technologies
A Crane Co. Company

Saunders
The Science Inside

Title
SCHEDULE OF LEADING DIMENSIONS FOR DN40/1.50
WEIR 'T' BODY WITH BUTT WELD ISO 1127 S1 ENDS.
FITTED WITH TOPWORKS OPTIONS

Drawn RI	Date 09.05.17	UNCONTROLLED IN HARD COPY FORMAT	
Checked RND	Date 09.05.17		
First Angle Projection Method E	DO NOT SCALE	Drawing No. WEB-077-ASSY	Issue. 1